

北極海環境変動研究：海氷減少と海洋生態系の変化
おしよろ丸によるベーリング・チャクチ海観測航海報告

平譚 享¹、綿貫 豊¹、菊地 隆²、おしよろ丸乗船共同研究者

¹北海道大学大学院水産科学研究院

²独立行政法人海洋研究開発機構

**Ecosystem studies of the Arctic Ocean declining Sea ice:
Report on research cruise of T/S Oshoro Maru in the Bering and Chukchi Seas**

Toru Hirawake¹, Yutaka Watanuki¹, Takashi Kikuchi² and co-researchers

¹Faculty of Fisheries Sciences, Hokkaido University

²Japan Agency for Marine-Earth Science and Technology (JAMSTEC)

As a part of research project 'Ecosystem studies of the Arctic ocean declining Sea ice (ECOARCS)' under the GRENE Arctic Climate Change Research Project, research cruise by T/S Oshoro Maru of Hokkaido University in the Bering and Chukchi Seas was conducted in June and July 2013. CTD observations and water collections at 75 stations were carried out and biological and chemical parameters of the waters were analyzed. We also successfully operated sediment sampling, fish larvae collection, plankton collection, bottom trawl, ROV, dredge, and bio-optical measurements for satellite oceanography. The sea bird and mammal sighting surveys were also conducted from the upper bridge. The cruise has been completed almost of what we planned.

During the cruise, we investigated gradations in physical and chemical environments together with planktons and demersal fishes from open water to sea ice edge. We will report details of the observations and preliminary results from the cruise.

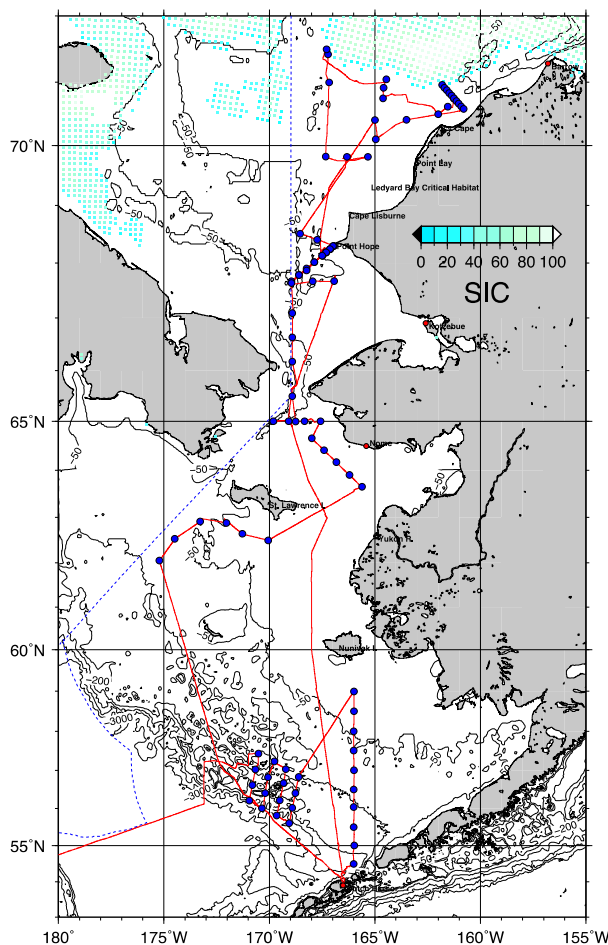


Figure 1. Map of sampling stations of cruise of T/S Oshoro Maru in the Bering and Chukchi Seas.